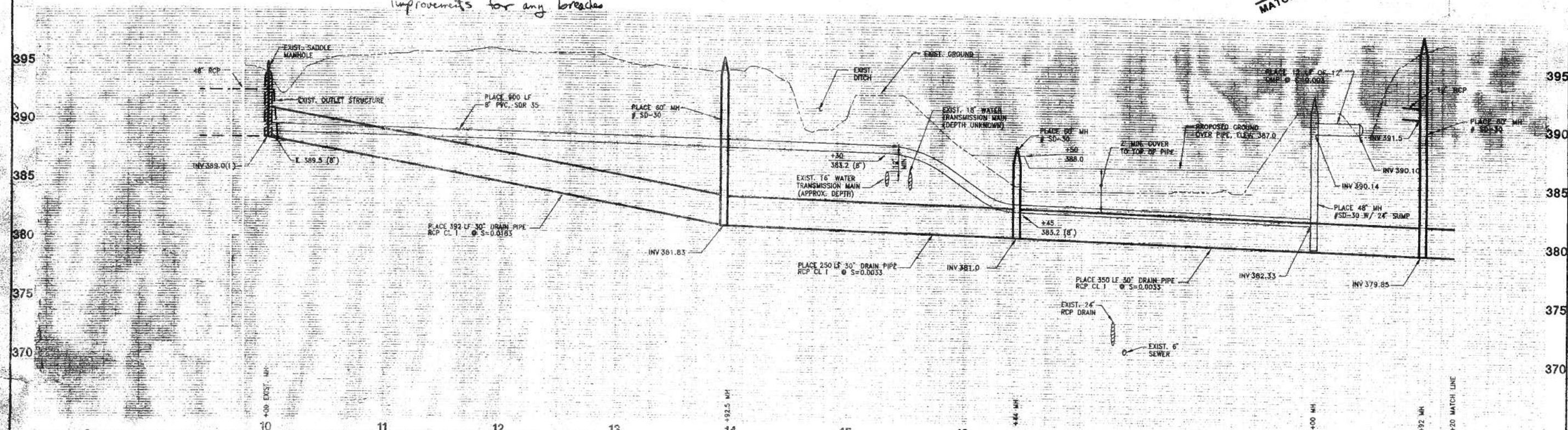


- 

SCALE: 1" = 40'

1. Check this pipe reaches for leaks
2. Check connections & surface improvements for any breaches

DATE: 7/16/97



10				11		12		13		14		15		16		17		18		19		20		SHEET	
REVISIONS				BENCH MARK		FIELD BOOK		CITY OF FOLSOM DEPARTMENT OF PUBLIC WORKS		IMPROVEMENT PLANS FOR NATOMAS DITCH REPLACEMENT 30" RAW WATER LINE STA 10+00 TO STA. 20+20				The Spink Corporation 2500 VENTURE DRIVE, WAY SACRAMENTO, CALIFORNIA 95833 TEL. (916) 925-5555 FAX. (916) 921-9374				OF 5							
DESCRIPTION				ELEV.		SCALE																			
DATE				(SEE SHEET END)		DRAWN BY		DESIGNED BY		CHECKED BY															

26

27

## WILLOW CREEK ESTATES UNIT NO. 7

164 B.M. 12

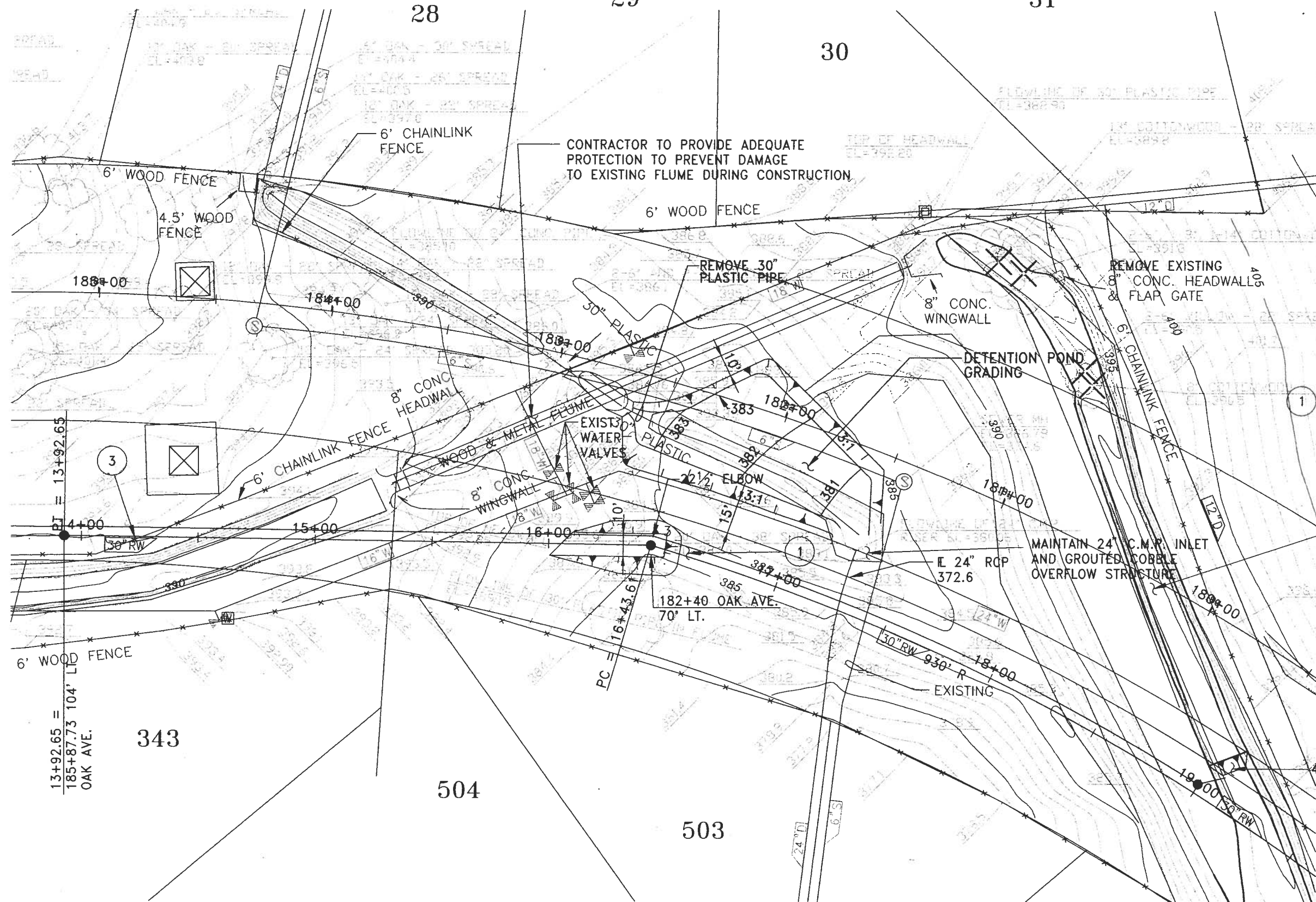
29

28

30

31

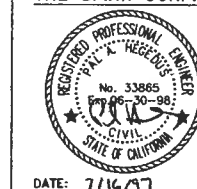
SCALE: 1" = 20'



1 STA. 16+55 TO 18+50 -  
CONSTRUCT BERM OVER  
PIPES, TOP OF BERM TO  
BE AT ELEVATION 387.0

CLEAR, GRUB &  
FILL DITCH TO  
ELEVATION OF EXISTING  
OUTLET TO 8" PVC INLET

THE SPINK CORP.



DATE: 7/16/97

REVISIONS			
NO.	DESCRIPTION	DATE	BY

BENCH MARK	ELEV.
DESCRIPTION:	
(SEE SHEET ONE)	

FIELD BOOK
SCALE
HORIZ. 1"=20'
VERT. N/A

CITY OF FOLSOM  
DEPARTMENT OF PUBLIC WORKS

DRAWN BY: JC	DESIGNED BY: P. TOBIA	CHECKED BY: P. TOBIA
DATE: -	R.C.E. - DATE: -	R.C.E. - DATE: -

IMPROVEMENT PLANS FOR  
NATOMAS DITCH REPLACEMENT  
NATOMAS DITCH  
DETENTION POND GRADING

The Spink Corporation  
2200 VENTURE GARDEN WAY  
SACRAMENTO, CALIFORNIA 95833  
TEL: (916) 925-5000 FAX: (916) 921-9274

SHEET  
5  
OF  
5