

# GENERAL NOTES

- 1 SERVICE PEDestal SHALL CONFORM TO THE PROVISIONS IN SECTIONS 96-2.11 "SERVICE" OF THE STATE OF CALIFORNIA
- 2 SEE PLANS FOR CONDUIT AND WIRE SIZE
- 3 PAINT SERVICE CAN AND METER SECTION.
- 4 SERVICE EQUIPMENT CABINETS SHALL BE PRE-WIRED AND SHALL CONFORM TO NEMA CLASS II C STANDARDS.
- 5 ALL CONTROL WIRING SHALL BE AWG 14 PED 18 STRAND WIRE UNLESS OTHERWISE NOTED.
- 6 EACH SERVICE EQUIPMENT CABINET SHALL BE PROVIDED WITH "PNEUMATIC" NAME PLATE ON THE DEAD FRONT PANEL FOR EACH BREAKER INSTALLED. ALL NAME PLATES TO BE SIGNED ON.
- 7 A PLASTIC COATED WIRING DIAGRAM SHALL BE PROVIDED AND PLACED TO THE INSIDE OF THE FRONT DOOR.
- 8 ALL SERVICE EQUIPMENT CABINETS SHALL BE NEMA 3-R AND NEMA 12 CONSTRUCTION.
- 9 FACTORY BUSSED (300 AMP) UNDERGROUND PULL SECTION WITH ALUMINUM BODIED LANDING LUGS WITH SOLDERED TERMINALS FOR PREWIRED METERED AND UNMETERED CIRCUITS.
- 10 ALL EQUIPMENT SUPPLIED SHALL BE A CURRENTLY MANUFACTURED ITEM.
- 11 DIAGRAM B - THE SERVICE EQUIPMENT CABINET SHALL BE STILL BUSSED TO PERMIT METERED AND UNMETERED BRANCH CIRCUITS.
- 12 DIAGRAM A, B, C - FOR SMALLER SERVICE THAN SHOWN, THE UNUSED COMPONENTS SHALL NOT BE REQUIRED.

## WIRING DIAGRAM SYMBOLS

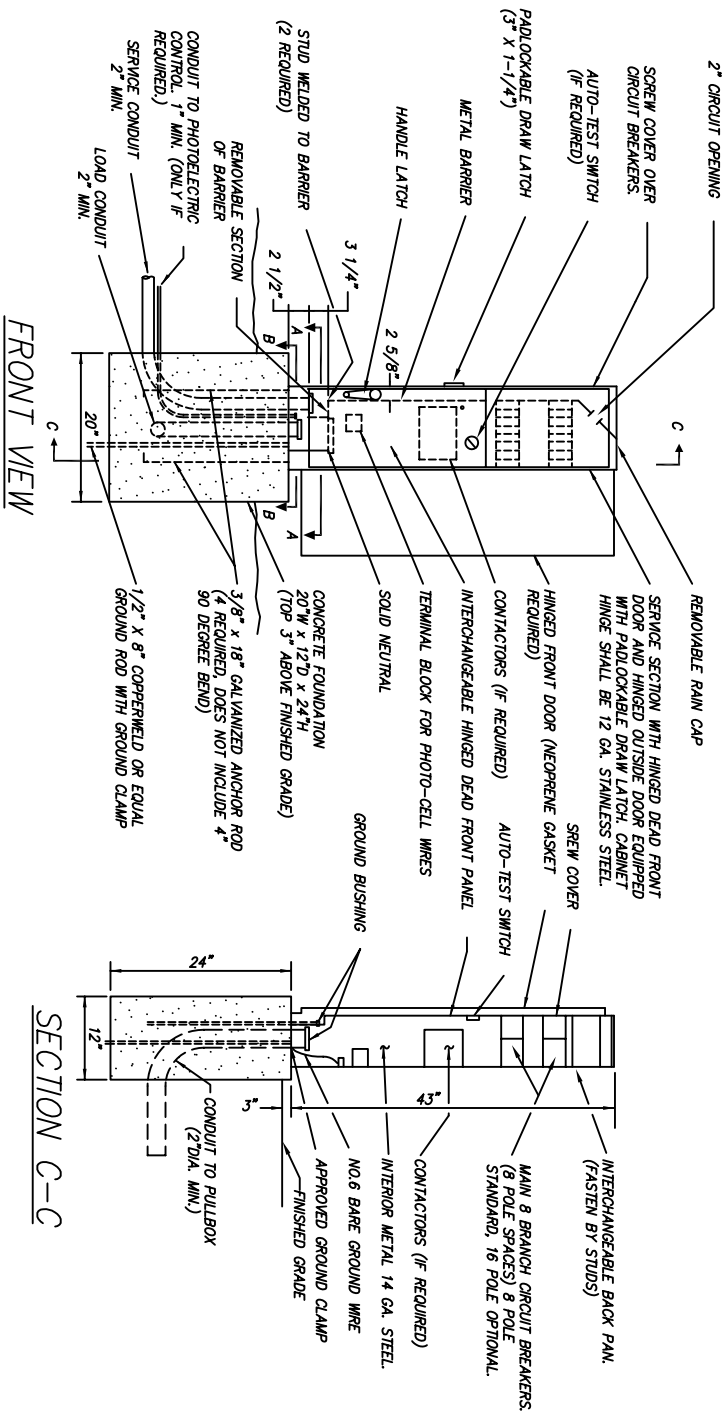
- Ⓜ METER SECTION WITH MANUAL CIRCUIT CLOSING DEVICE
- ⓐ CONTRACTOR (LIGHTING) - 30A
- ⓑ ELECTRICALLY HEATED CONTRACTOR-30A
- ⓓ TRANSFORMER
- ⓔ SOLID NEUTRAL BUS
- ⓖ AUTO-TEST SWITCH
- ⓗ PHOTOELECTRIC UNIT (BY OTHERS)
- ⓓ TERMINAL BLOCK FOR PHOTOCELL WIRES

## CITY OF FOLSOM

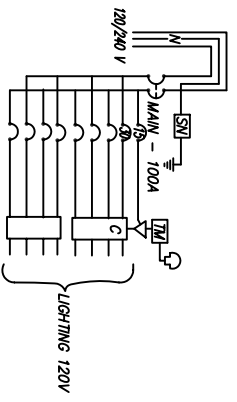
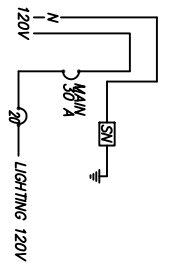
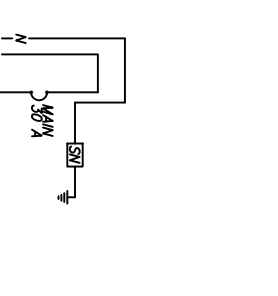
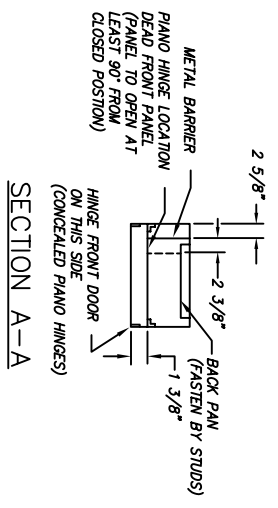
## SERVICE CABINET AND METER SOCKET

SCALE: NONE  
DATE: JULY 2003  
DRAWN BY: STAFF

EL-2



- ### GENERAL NOTES
- 1 SERVICE GEOSTYL SHALL CONFORM TO THE SERVICE GEOSTYL SPECIFICATIONS 86-217 SERVICE OF THE STATE OF CALIFORNIA.
  - 2 SEE PLANS FOR CONDUIT AND WIRE SIZE.
  - 3 SERVICE CAN SHALL BE 14 GAGE STAINLESS STEEL.
  - 4 SERVICE EQUIPMENT CABINETS SHALL BE PRE-WIRED AND SHALL CONFORM TO N.E.M.A. CLASS II C STANDARDS.
  - 5 ALL CONTROL WIRING SHALL BE AWG 14 PED NOTED.
  - 6 EACH SERVICE EQUIPMENT CABINET SHALL BE PROVIDED WITH A MINIMUM OF TWO NAME PLATES ON THE DEAD FRONT PANEL FOR EACH BREAKER INSTALLED. ALL NAME PLATES TO BE SCREWED ON.
  - 7 A PLASTIC COATED WIRING DIAGRAM SHALL BE PROVIDED AND ATTACHED TO THE INSIDE OF THE FRONT DOOR.
  - 8 ALL SERVICE EQUIPMENT CABINETS SHALL BE NEMA 3-R.
  - 9 ALL EQUIPMENT SUPPLIED SHALL BE A CURRENTLY MANUFACTURED ITEM.
  - 10 DIAGRAM - C FOR SMALLER SERVICE THAN SHOWN. THE UNUSED COMPONENTS SHALL NOT BE REQUIRED.

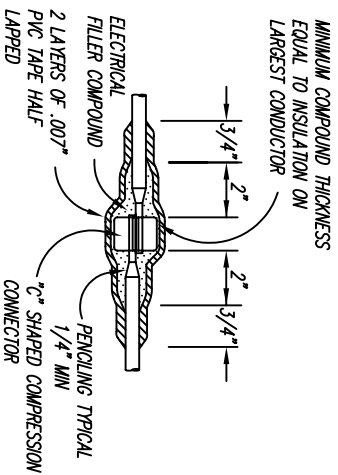


- ### WIRING DIAGRAM SYMBOLS
- [C] CONTACTOR (LIGHTING) - 30A
  - [SN] SOLID NEUTRAL BUS
  - [▽] AUTO-TEST SWITCH
  - [PE] PHOTOELECTRIC UNIT (BY OTHERS)
  - [TM] TERMINAL BLOCK FOR PHOTOCELL WIRES

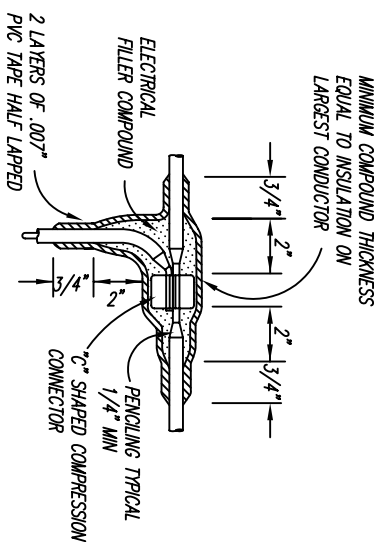
## CITY OF FOLSOM

### STREET LIGHT SERVICE CABINET

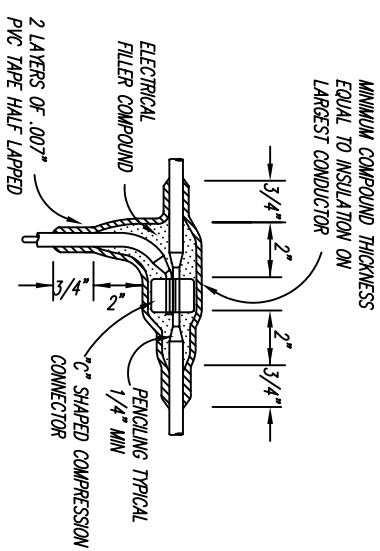
SCALE: NONE  
DATE: JULY 2003  
DRAWN BY: STAFF



TYPE "S" SPLICE  
(BETWEEN 2 FREE ENDS)



TYPE "C" SPLICE  
(BETWEEN 1 FREE END AND 1 THROUGH CONDUCTOR)



TYPE "T" SPLICE  
(FOR 3 FREE ENDS)

## INSULATING METHOD

### LOW VOLTAGE CIRCUITS (0-600 VOLTS)

METHOD "A"  
APPLY ELECTRICAL FILLER COMPOUND AND LOW VOLTAGE TAPE AS SHOWN.

OR

METHOD "B"  
1 USE 2 LAYERS OF ELECTRICAL INSULATING PAD OF MINIMUM THICKNESS OF 1/8" EACH OR 2 LAYERS, HALF LAPPED, SYN-THETIC, OIL RESISTENT, SELF FUSING RUBBER TAPE.

2 APPLY .007" THICK PVC TAPE TO A THICKNESS EQUAL TO ORIGINAL INSULATION.

### HIGH VOLTAGE CIRCUITS (0-600 VOLTS)

1 APPLY ONE COAT OF RUBBER CEMENT AND ALLOW TO DRY.

2 APPLY HIGH VOLTAGE TAPE IN PLACE OF FILLER COMPOUND TO A THICKNESS EQUAL TO ORIGINAL INSULATION.

3 APPLY 2 LAYERS OF PVC TAPE, HALF LAPPED.

## GENERAL NOTES

1 ALL DIMENSIONS ARE NOMINAL AND MINIMAL.

2 RUBBER TAPES SHALL BE ROLLED AFTER APPLICATION.

3 WHEN PVC TAPE IS USED AS FINAL LAYER, PAINT FINISHED SPLICE WITH ELECTRICAL INSULATING COATING.

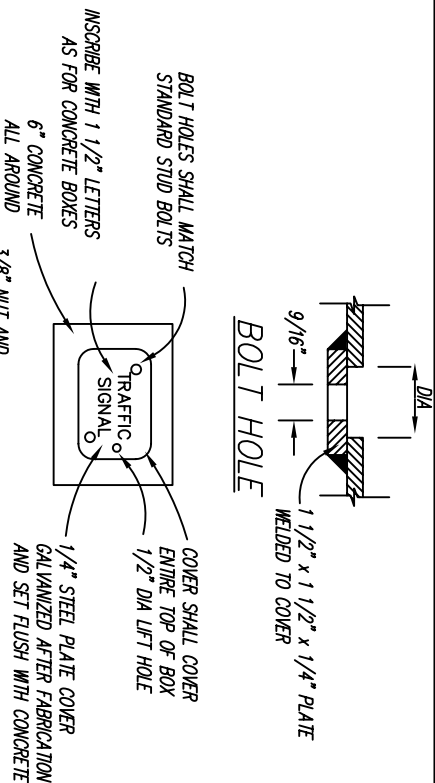
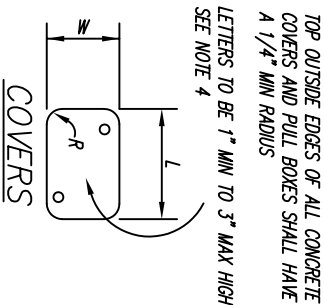
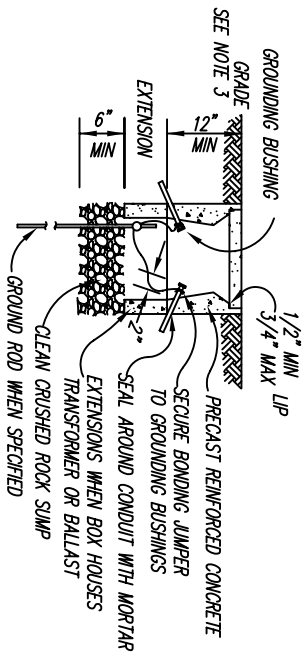
4 PRESSURE SLEEVE TYPE CONNECTORS MAY BE USED FOR TYPE "S" AND "T" SPLICES.

CITY OF FOLSOM

STANDARD SPLICING DETAILS

SCALE: NONE  
DATE: JULY 2003  
DRAWN BY: STAFF

EL-4



PULL BOX NO.	CONCRETE BOX		CONCRETE COVER				PLASTIC BOX		PLASTIC COVER			
	MIN * THICKNESS	MIN DEPTH BOX AND EXTENSION	L **	W **	R	MIN THICKNESS	MIN * THICKNESS	MIN DEPTH BOX AND EXTENSION	L **	W **	R	EDGE THICKNESS
3 1/2	1"	NO EXTENSIONS	15 5/16"	9 15/16"	1 5/32"	1 5/8"	5/16"	NO EXTENSION	15 3/8"	10"	1 5/32"	1 3/4"
5	1"	22"	20 5/8"	10 1/2"	1 5/32"	1 7/8"	5/16"	20"	23"	13 11/16"	1 1/4"	2"
6	1 1/2"	24"	30 5/8"	17 5/8"	1 1/2"	1 7/8"	3/8"	20"	30 1/2"	17 5/8"	1 3/8"	2"

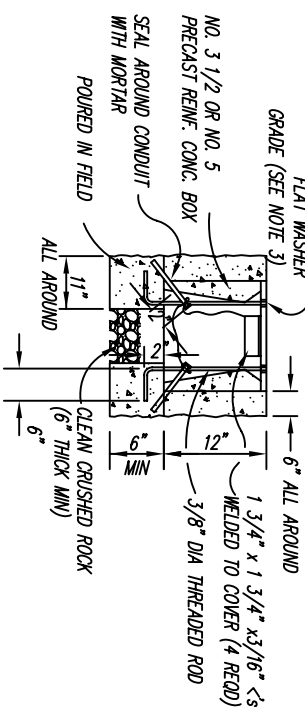
\*EXCLUDING CONDUIT WEB \*\*TOP DIMENSION

COVER OF DIMENSIONS SHOWN SHALL FIT FLUSH WITH TOP OF BOX WITH A 1/8" MAXIMUM CLEARANCE ALL AROUND, EXCEPT THAT CORNERS MAY BE 1/2" MAXIMUM CLEARANCE.

### NOTES:

- 1 USE STEEL COVER AND SPECIAL CONCRETE FOOTING, AS SHOWN, WHEN BOX IS TO BE INSTALLED WHERE SUBJECT TO TRAFFIC LOADS. STEEL COVER SHALL HAVE EMBOSSED NON-SKID PATTERN WHEN BOX IS PLACED IN PAVED OR SIDEWALK AREAS.
- 2 STEEL REINFORCING SHALL BE AS REGULARLY USED IN THE STANDARD PRODUCTS OF THE RESPECTIVE MANUFACTURER.
- 3 TOP OF PULL BOXES SHALL BE FLUSH WITH SURROUNDING GRADE OR TOP OF ADJACENT CURB, EXCEPT THAT IN UNPAVED AREAS WHERE THE BOX SHALL BE PLACED WITH ITS TOP 0.10 FOOT ABOVE SURROUNDING GRADE. WHERE PRACTICABLE, PULL BOXES SHOWN IN THE VICINITY OF CURBS SHALL BE PLACED ADJACENT TO BACK OF CURB, AND PULL BOXES SHOWN ADJACENT TO STANDARDS SHALL BE PLACED ON SIDE OF FOUNDATION FACING TRAFFIC.
- 4 PULL BOX COVERS SHALL BE MARKED AS FOLLOWS:
  - (a) "TRAFFIC SIGNAL" WHERE PULL BOX CONTAINS TRAFFIC SIGNAL CONDUCTORS WITH OR WITHOUT STREET LIGHTING CONDUCTORS.
  - (b) "STREET LIGHTING" WHERE PULL BOX CONTAINS STREET LIGHTING CONDUCTORS ONLY. "HIGH VOLTAGE" SHALL BE ADDED WHERE STREET LIGHTING VOLTAGE IS ABOVE 600 VOLTS.
  - (c) "SERVICE" FOR PULL BOX WHERE RISER CONDUITS FROM UTILITY POLE TERMINATE.
- 5 BONDING JUMPERS FOR METAL COVERS SHALL BE A MINIMUM OF 36" LONG. METAL COVERS SHALL BE ELECTRICALLY BONDED TO THE CONDUIT GROUND.

### PULLBOX WITH STEEL TRAFFIC COVER



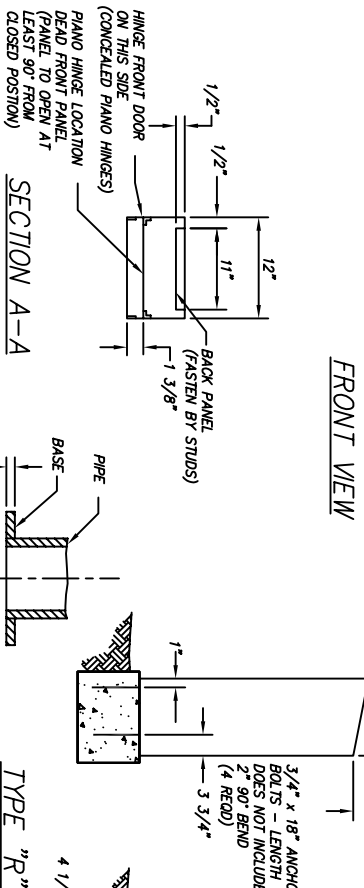
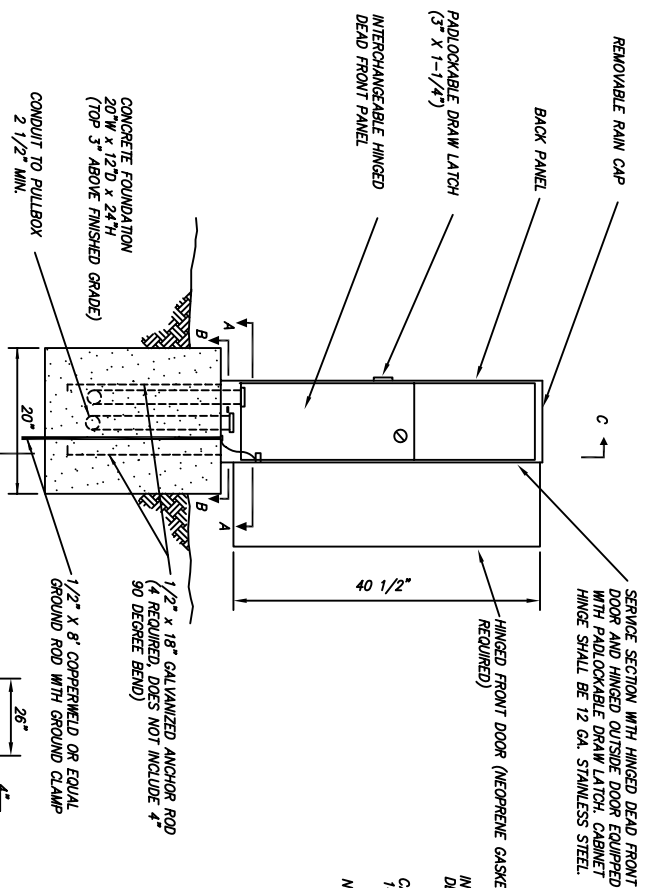
### CITY OF FOLSOM

### STANDARD PULLBOX DETAILS

SCALE: NONE  
DATE: JULY 2003  
DRAWN BY: STAFF

# GENERAL INSTALLATION NOTES ALL CABINETS

1. ALL CABINET DIMENSIONS ARE NORMAL.
2. FOUNDATION SHALL BE LOCATED TO PROVIDE 60" MINIMUM CLEARANCE BETWEEN FACE OF CURB AND FACE OF CABINET.
3. ONE ANCHOR BOLT SHALL BE BONDED TO CONDUIT OR GROUND WIRE.
4. SERVICE CAN, CONTROLLER CABINET AND TERMINAL CABINET (IF NECESSARY) SHALL BE PLACED ON A COMMON FOUNDATION WITH 6 INCH SPACING, UNLESS OTHERWISE DIRECTED BY THE ENGINEER. THE SERVICE CAN SHALL BE TO THE LEFT OF THE CONTROLLER CABINET AS IT IS FACED FROM THE STREET.
5. APPROVED WATERPROOF SEAL TO BE APPLIED TO BASE OF TYPE "R" AND MODIFIED TYPE "M" CABINET AND FOUNDATION.
6. IN UNPAVED AREAS A P.C.C. PAD OF 36" x 30" x 4" FOR MODIFIED TYPE "R" AND PRETINED CONTROLLER CABINETS AND ALL 40" x 38" x 4" FOR TYPE "R" CABINETS SHALL BE PLACED IN FRONT OF EACH CONTROLLER CABINET.
7. IN ALL UNPAVED AREAS, TOP OF FOUNDATION FOR TYPE "R" MODIFIED TYPE "M" AND PRETINED CONTROLLER CABINETS SHALL BE 6" ABOVE SURROUNDING GRADE. IN PAVED AREAS TOP OF FOUNDATION FOR PRETINED CONTROLLER CABINETS SHALL BE LEVEL WITH SURROUNDING GRADE. FOR ALL OTHERS IT SHALL BE 3" ABOVE PAVED AREAS.
8. ANCHOR BOLTS, NUTS AND WASHERS SHALL BE GALVANIZED.
9. ALL CONDUITS SHALL BE BONDED TOGETHER IN THE CABINETS.
10. LOCATIONS SHOWN FOR EQUIPMENT ARE TYPICAL ONLY.
11. A 1/2" DIA DRAIN HOLE SHALL BE FORMED IN THE TYPE "R" AND MODIFIED TYPE "M" CONTROLLER BASE. ALL CABINETS SHALL BE LEVELLED SO THAT THE CABINET DOOR WILL OPEN AND CLOSE EASILY.



TYPE "R" CABINET

MODIFIED TYPE "M" CABINET BASE

GUARD POST

PEDESTRIAN PUSH BUTTON POST

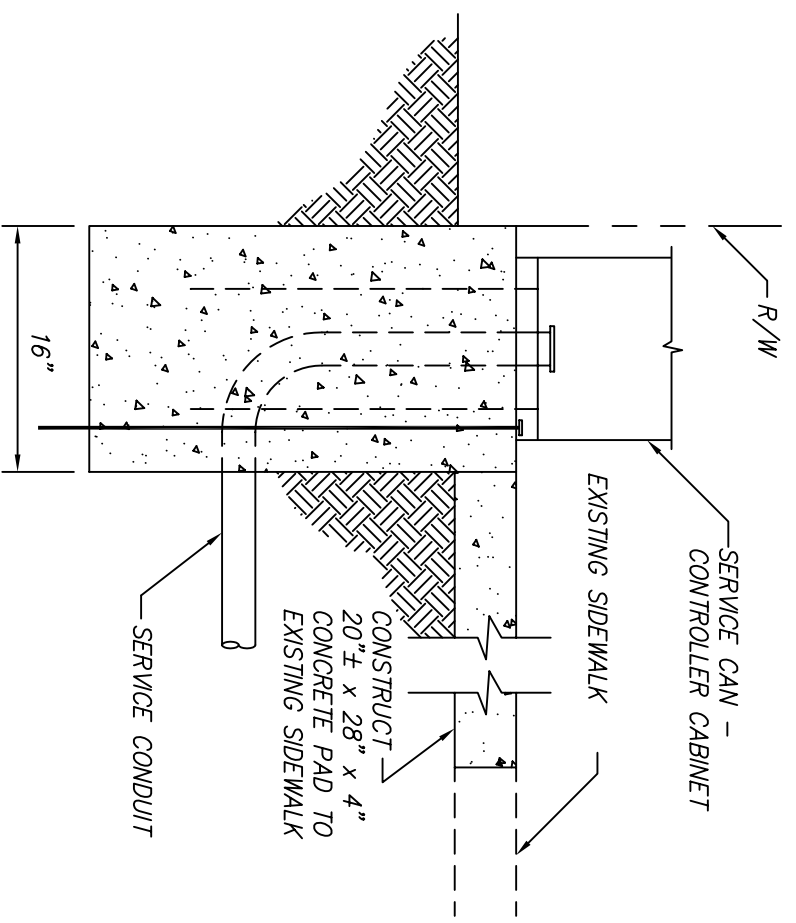
SECTION B-B

STANDARD DETAILS  
CONTROLLER CABINETS AND  
MISCELLANEOUS DETAILS

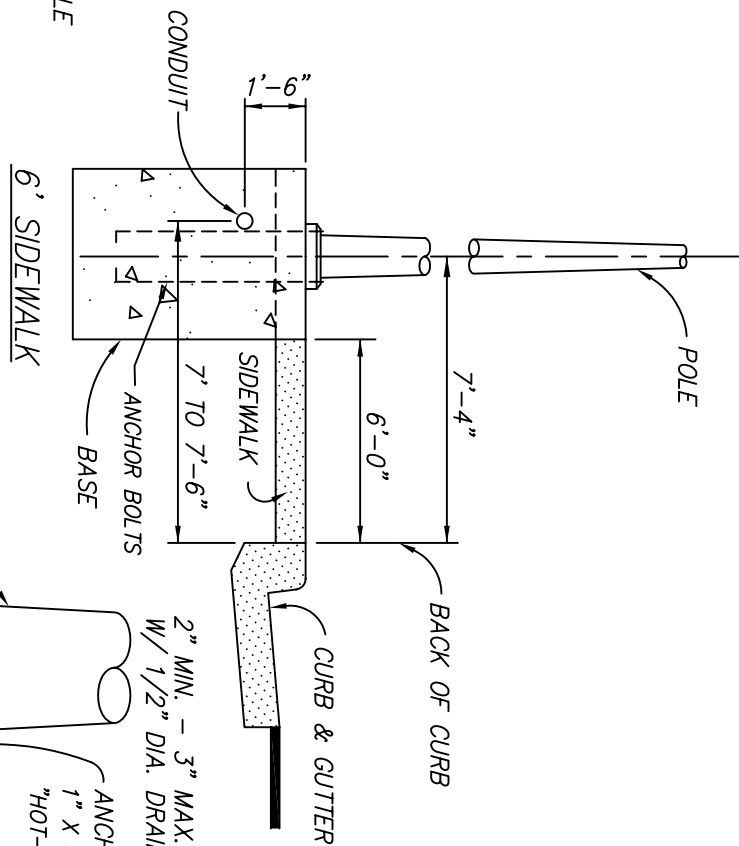
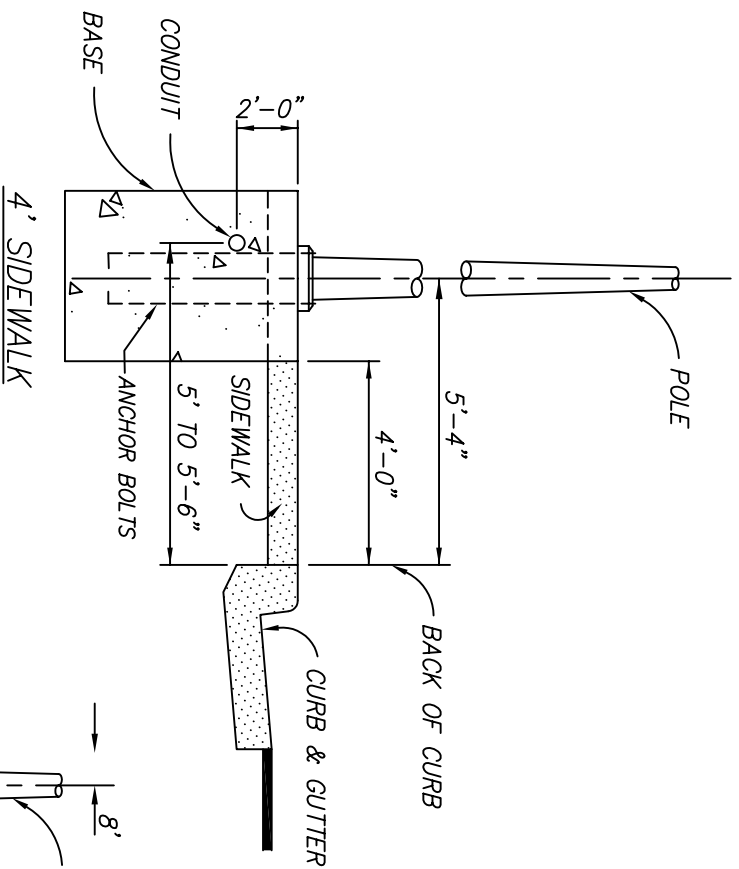
CITY OF FOLSOM

SCALE: NONE  
DATE: JULY 2003  
DRAWN BY: STAFF

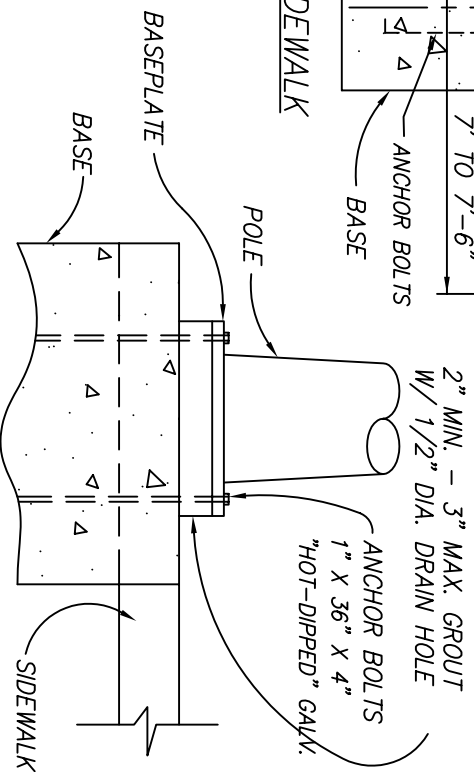
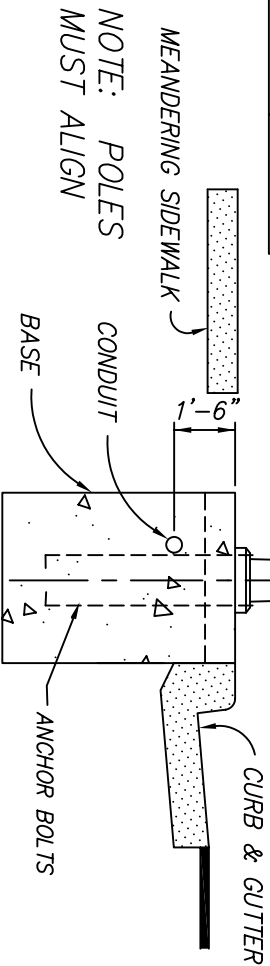
EL-6



EL-7



FOUNDATION DIMENSIONS			
BASE DIMENSIONS			
	SQUARE	ROUND	
"A" Series	2'6" x 2'6" x 5'	30" x 6'6"	
"B" Series	2' x 2' x 4'	30" x 3'6"	

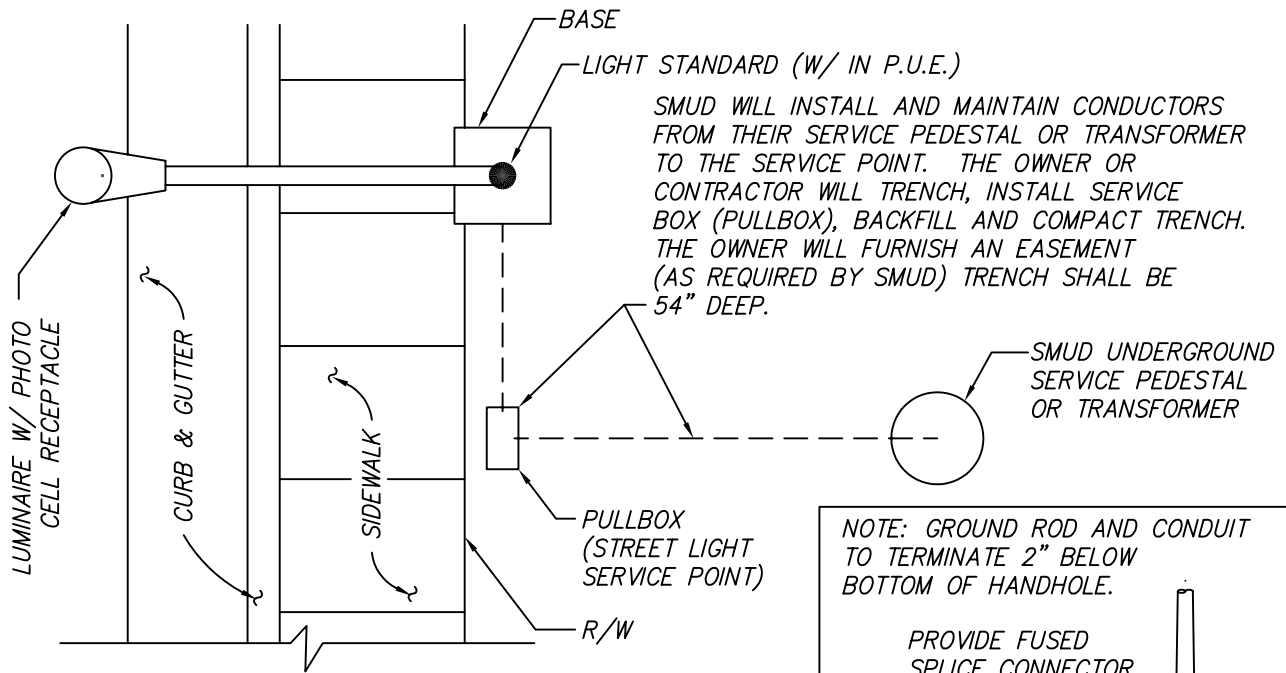


# CITY OF FOLSOM

BASE DESIGN  
AND LOCATION  
FOR STREET LIGHT

SCALE: NONE  
DATE: JULY 2003  
DRAWN BY: STAFF





### COMMERCIAL SERVICE

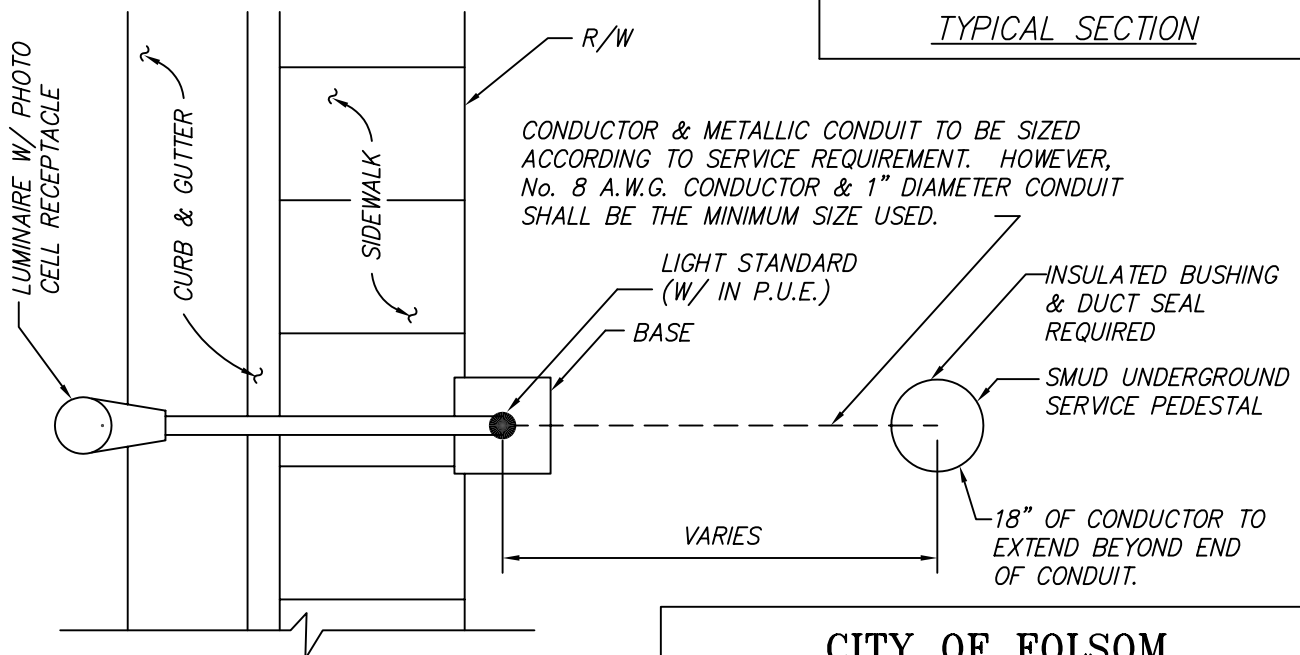
**NOTE:**  
CONNECT NEUTRAL CONDUCTOR TO  
GROUNDING ELECTRODE IN POLE.

**NOTE:** GROUND ROD AND CONDUIT  
TO TERMINATE 2" BELOW  
BOTTOM OF HANDHOLE.

PROVIDE FUSED  
SPlice CONNECTOR  
IN HANDHOLE  
OF POLE

GROUND ROD TO  
BE Banded TO  
CONDUIT & TO  
POLE.

### TYPICAL SECTION



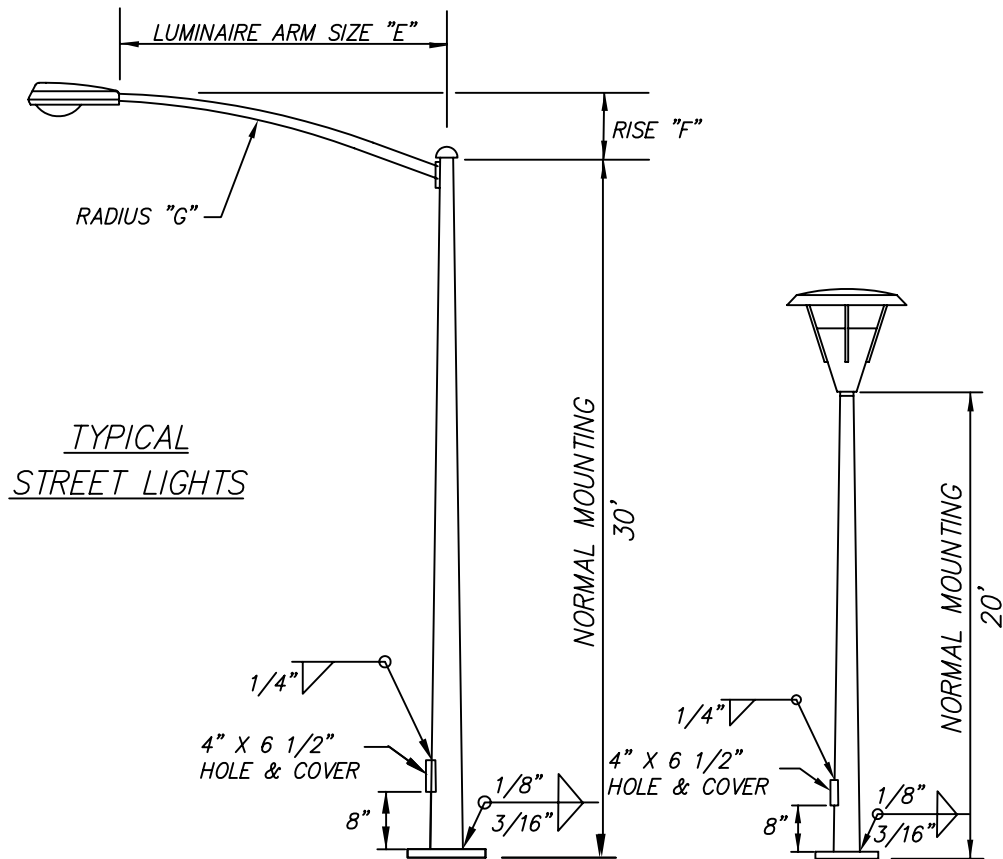
### RESIDENTIAL SERVICE

## CITY OF FOLSOM

### LIGHT STANDARD INSTALLATION TO DIRECT SERVICE

**SCALE:** NONE  
**DATE:** JULY 2003  
**DRAWN BY:** STAFF

EL-9



LUMINAIRE ARM DATA			
"E"	END OD X BASE OD X GA	"F"	"G"
6'-0"	2 3/8"x3 3/16" x 10	1'-6"	7'-5"
8'-0"	2 3/8"x3 11/16" x 10	2'-3"	7'-5"
10'-0"	2 3/8"x3 7/8" x 10	2'-6"	13'-3"
12'-0"	2 3/8"x4 5/16" x 10	3'-9"	13'-3"
15'-0"	2 3/8"x4 3/4" x 10	4'-3"	13'-3"
18'-0"	2 3/8"x4 3/4" x 10	5'-3"	13'-3"

### SERIES "A"

#### POLE DATA

TOP O.D.: 3 7/8"  
 BASE O.D.: 8"  
 GAGE: 10  
 LENGTH: 30'

#### BASE PLATE DATA

OUTSIDE: 11 1/2" SQUARE  
 INSIDE CIRCLE: 11 1/2" DIAMETER  
 THICKNESS: 1"  
 HOLE ANCHOR: 1 1/4"

### SERIES "B"

#### POLE DATA

TOP O.D.: 2 7/8"  
 BASE O.D.: 5 1/4"  
 GAGE: 10  
 LENGTH: 20'

#### BASE PLATE DATA

OUTSIDE: 10" SQUARE  
 INSIDE CIRCLE: 9 1/2" DIAMETER  
 THICKNESS: 1"  
 HOLE ANCHOR: 1 1/4"

#### NOTE:

STREET LIGHT ELECTRICAL WIRING & CONDUIT  
 SHALL CONFORM TO SMUD STANDARDS.

SEE SS108-7 FOR POLE  
 MATERIAL OPTIONS.

FIBRE-GLASS POLES NOT ALLOWED.

## CITY OF FOLSOM

### "A" SERIES AND "B" SERIES POLES

SCALE: NONE  
 DATE: JULY 2003  
 DRAWN BY: STAFF

EL-10