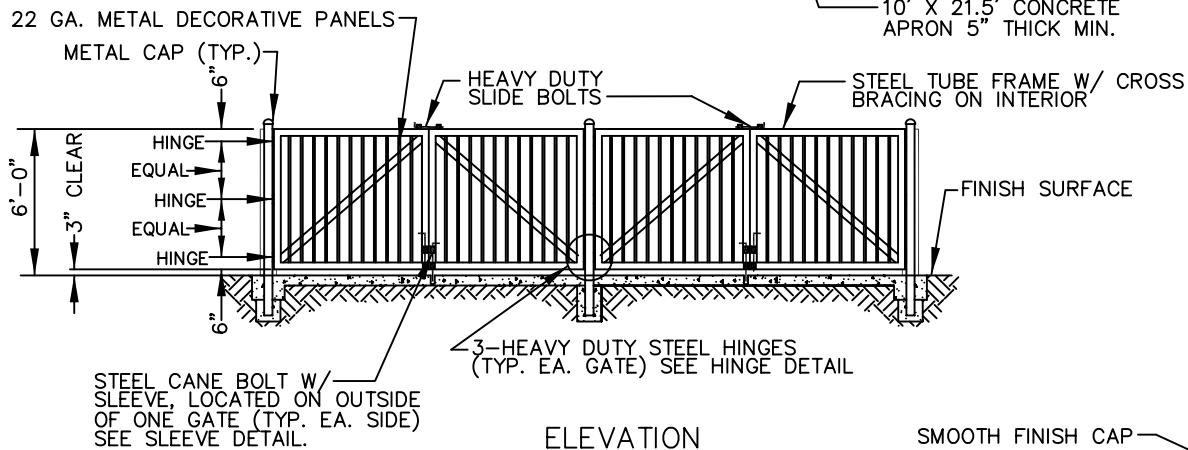
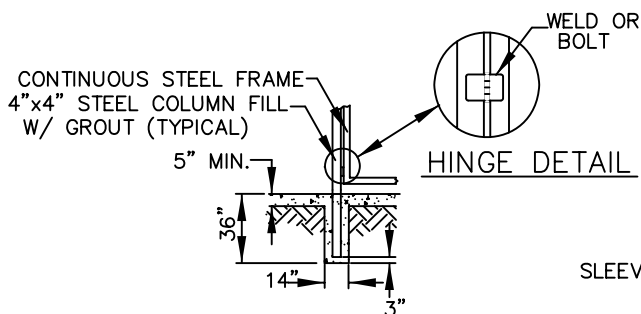


PLAN VIEW

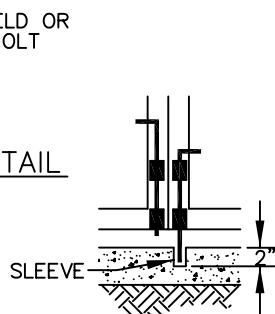


ELEVATION

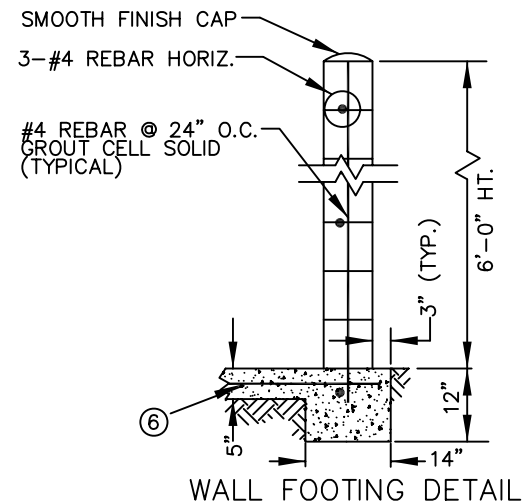


HINGE DETAIL

STEEL COL. FOOTING



SLEEVE DETAIL



WALL FOOTING DETAIL

NOTES

- Grease/Tallow bin enclosure may be attached to the trash enclosures or be constructed separately. The grease/tallow bin must not be located within the trash/recycling enclosure.
- Enclosure shall be oriented for unobstructed straight access by a vehicle 45' in length.
- Gates must have 90° operation and be equipped to be held in the open position with pins.
- Wall color and texture must be approved by the city.
- All metal to receive one coat chromate primer and two coats of medium alkyd paint.
- Minimum 5" thick concrete slab w/6"x6"-10/10 W.W.M. or equal.
- Structural design to withstand 90 mph wind load.
- If property space conditions prevent construction of a single 10'x20' enclosure, the owner may construct two 10'x10' enclosures.

DIRECTOR

CITY OF FOLSOM
PUBLIC WORKS DEPARTMENT

TRASH/RECYCLING ENCLOSURE

SCALE: NONE
DATE: OCTOBER, 2006
DRAWN BY: STAFF

RD-25