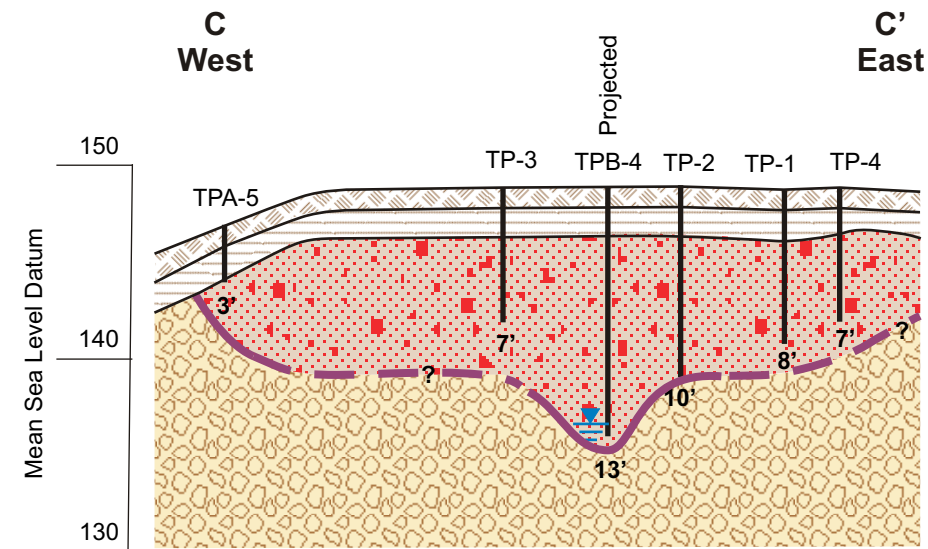
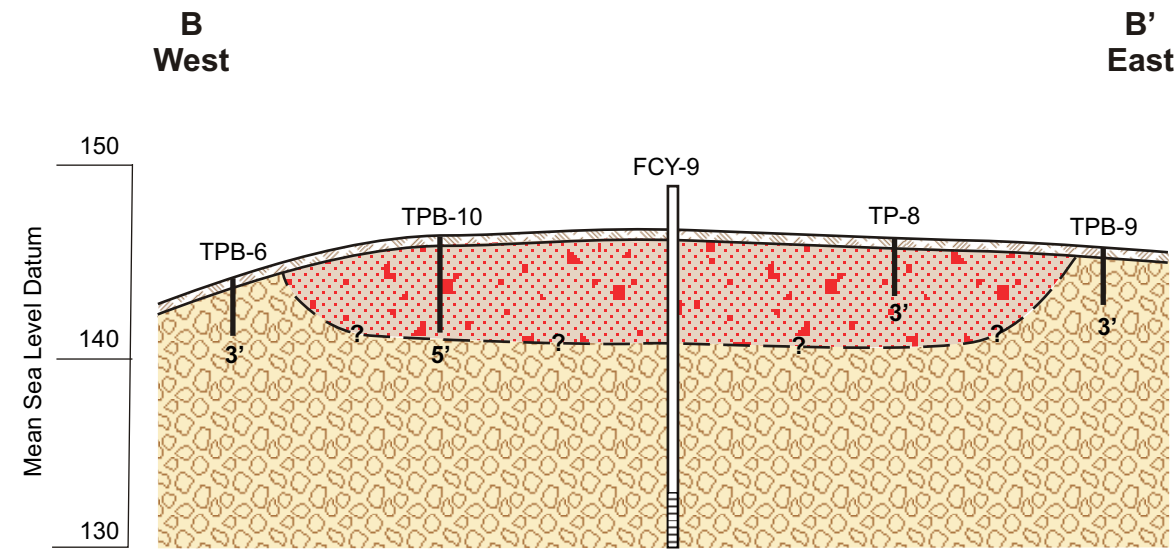
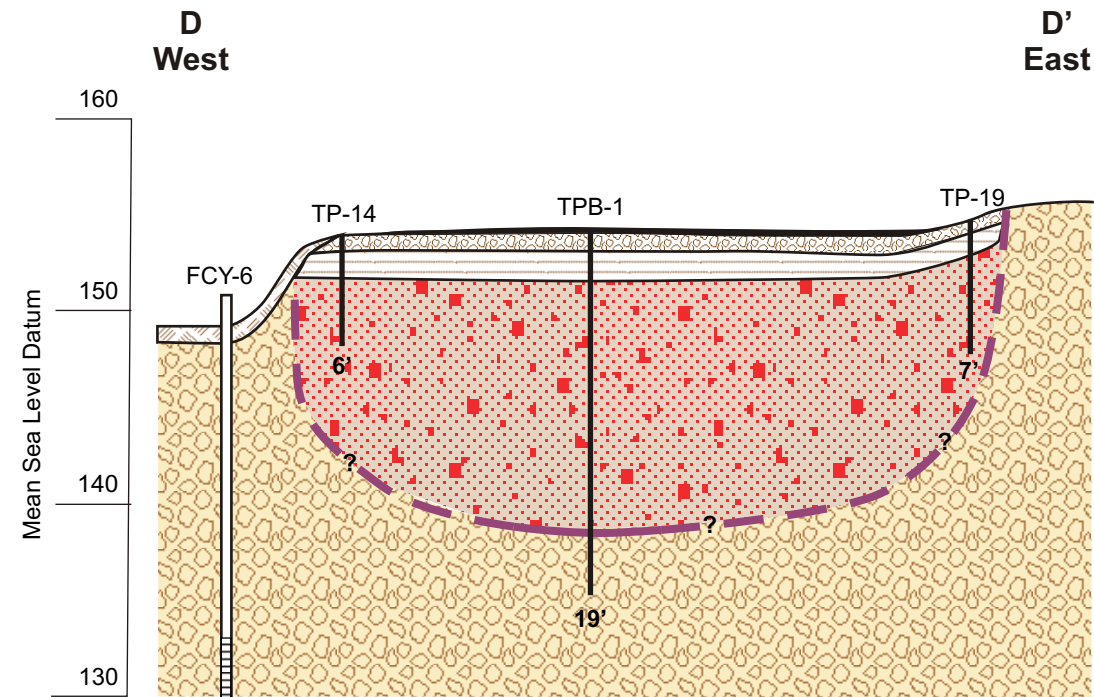


P:\34000\134473 - Folsom Landfill Clean Closure Investigation\Pre-Design Invest Feb 2008\Results Report\Figures



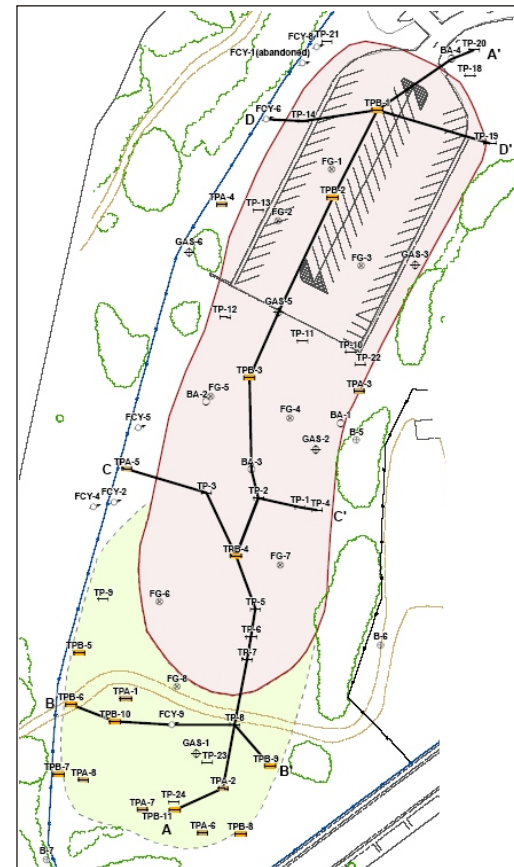
Legend

- FCY-6 Monitoring well designation (Various, 1985-2002)
- Screened interval in cased well
- 20' Total depth of well casing in feet below ground surface
- TP - Test Pit (Kleinfelder, October 2000)
- TPB - Test Pit (Brown and Caldwell, February, 2008)
- BA - Boring (Kleinfelder, November 2000)
- GAS - Gas monitoring well (Brown and Caldwell, January 1994)
- Suspected perched water



Geologic Legend

- Asphalt
- Aggregate
- Vegetative Soil Layer
- Clay Layer
- Fill Soil and Debris
- Former Sewage Treatment Plant Pond Liner, "?" - queried contact
- Dredge Tailings - Permeable gravels



TITLE Lateral Cross Sections of Landfill		
SITE Corporation Yard Landfill, Folsom, CA		
BROWN AND CALDWELL	PROJECT 134473	Figure 4
	DATE 3-25-08	