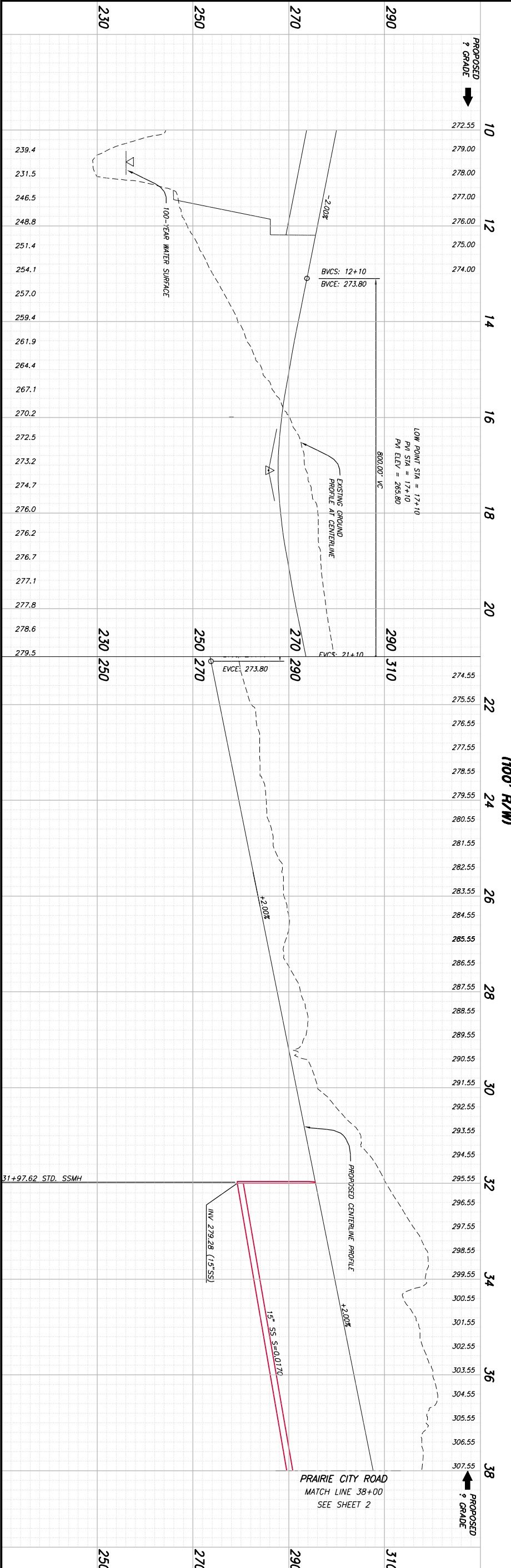
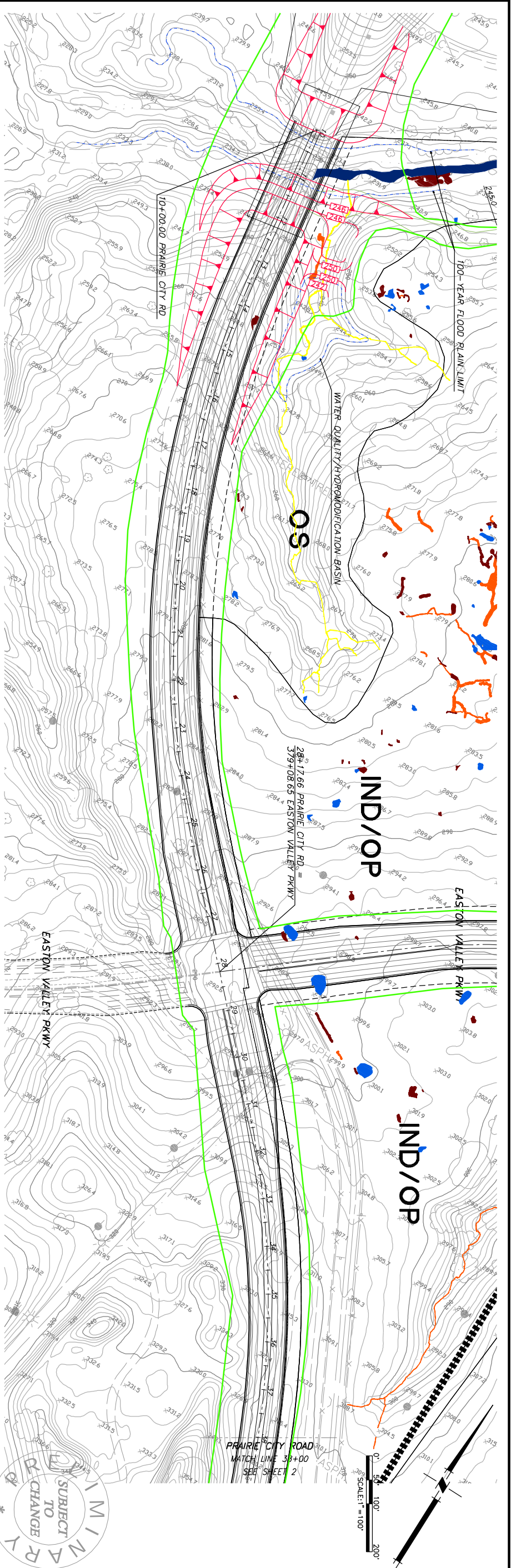


## **APPENDIX S**

---

Location of Proposed Water Quality/Hydromodification Basin



**PRAIRIE CITY ROAD**  
(100' R/W)



SHEET 1 OF 4		PLAN FOR THE IMPROVEMENT OF <b>PRAIRIE CITY ROAD</b> STA 10+00 TO STA 38+00 COUNTY OF SACRAMENTO CALIFORNIA		<b>Mackay &amp; Somps</b> CIVIL ENGINEERS, INC. SACRAMENTO, CALIFORNIA (916) 923-6092		DATE: JANUARY 2009 SCALE: H: 1"=100'; V: 1"=10' DRAWN BY: STAFF DESIGNED BY: MM CHECKED BY: KK		<table border="1"> <thead> <tr> <th>No.</th> <th>Description</th> <th>Init.</th> <th>Date</th> <th>By</th> <th>Date</th> </tr> </thead> <tbody> <tr> <td> </td> <td> </td> <td> </td> <td> </td> <td> </td> <td> </td> </tr> </tbody> </table>		No.	Description	Init.	Date	By	Date						
No.	Description	Init.	Date	By	Date																

12-02-2010 10:18:26 P:\7919\7919-SC\00\Master Plans\Roads\Prairie City\Pral-01.mxd  
 [1] prof-Pral.dwg [2] P:\7919\7919-SC\00\Master Plans\mjf-road-base081409.dwg [3] P:\7919\7919-SC\00\Topo\PrairieCityDLidarTopo.dwg [4] P:\7919\7919-SC\00\Master Plans\LandUsePlan\_NDMATCH081409.dwg [5] P:\7919\7919-SC\00\Topo\7919-00 ColoredWetlands081409.dwg [6] P:\7919\7919-SC\00\Master Plans\trail-base2.dwg [7] P:\79