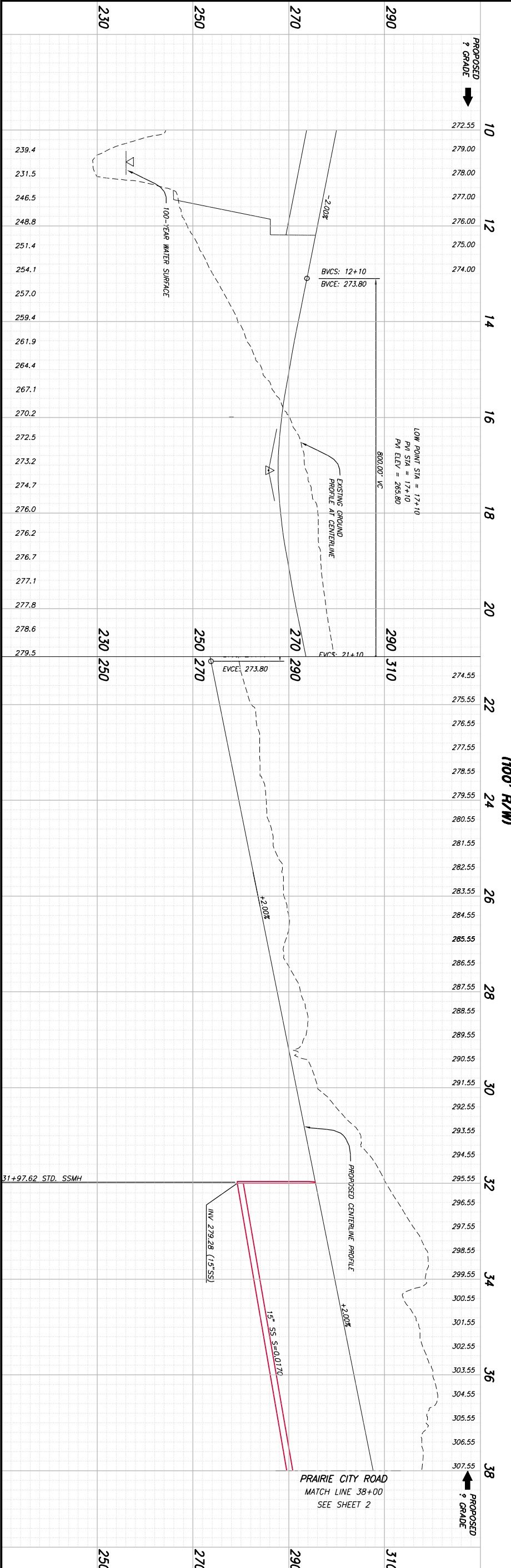
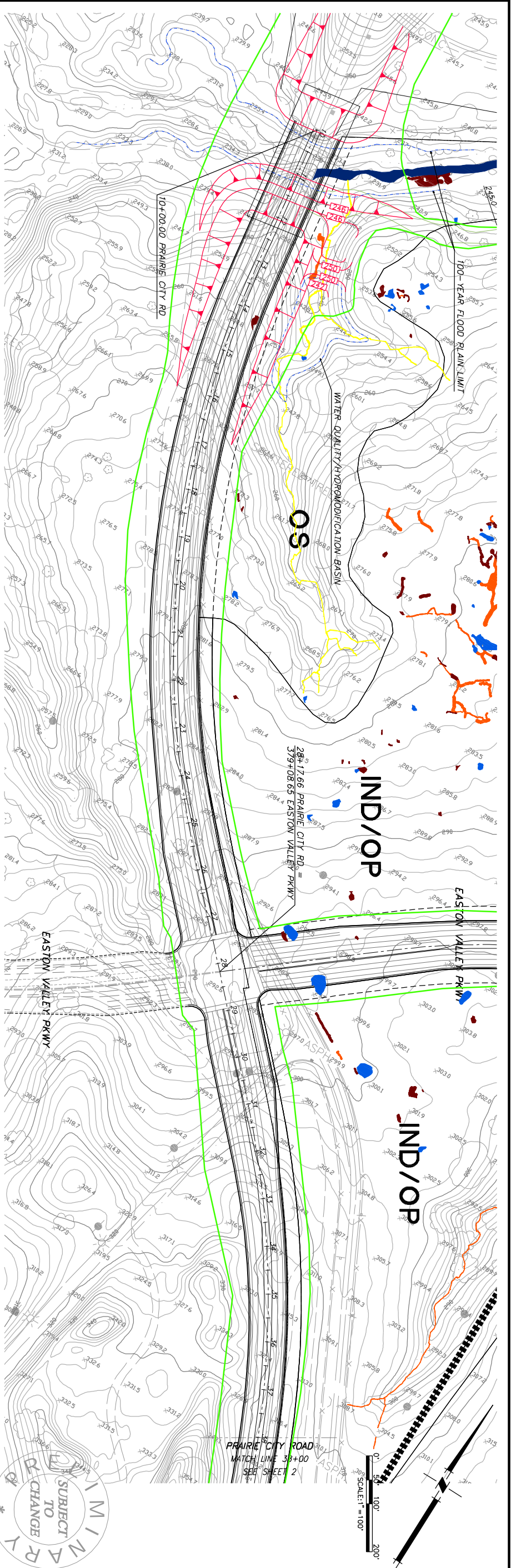


## **APPENDIX S**

---

Location of Proposed Water Quality/Hydromodification Basin



|              |  |  |  |   |  |  |  |  |  |
|--------------|--|--|--|---|--|--|--|--|--|
| SHEET 1 OF 4 |  | PLAN FOR THE IMPROVEMENT OF<br><b>PRAIRIE CITY ROAD</b><br>STA 10+00 TO STA 38+00<br>COUNTY OF SACRAMENTO CALIFORNIA |  | <b>MACKEY &amp; SOMPS</b><br>CIVIL ENGINEERS, INC.<br>SACRAMENTO, CALIFORNIA (916) 923-6092 |  | DATE: JANUARY 2009<br>SCALE: H: 1"=100'; V: 1"=10'<br>DRAWN BY: STAFF<br>DESIGNED BY: MM<br>CHECKED BY: KK |  | No. Description Init. Date By Date<br>APPROVAL |  |
|--------------|--|--|--|---|--|--|--|--|--|

12-02-2010 10:18:26 P:\7919\7919-SC\00\Master Plans\Roads\Prairie City\Pral-01.mxd  
 [1] prof-Pral.dwg [2] P:\7919\7919-SC\00\Master Plans\mjf-road-base081409.dwg [3] P:\7919\7919-SC\00\Topo\PrairieCityDLidarTopo.dwg [4] P:\7919\7919-SC\00\Master Plans\LandUsePlan\_NDMATCH081409.dwg [5] P:\7919\7919-SC\00\Topo\7919-00 ColoredWetlands081409.dwg [6] P:\7919\7919-SC\00\Master Plans\trail-base2.dwg [7] P:\79