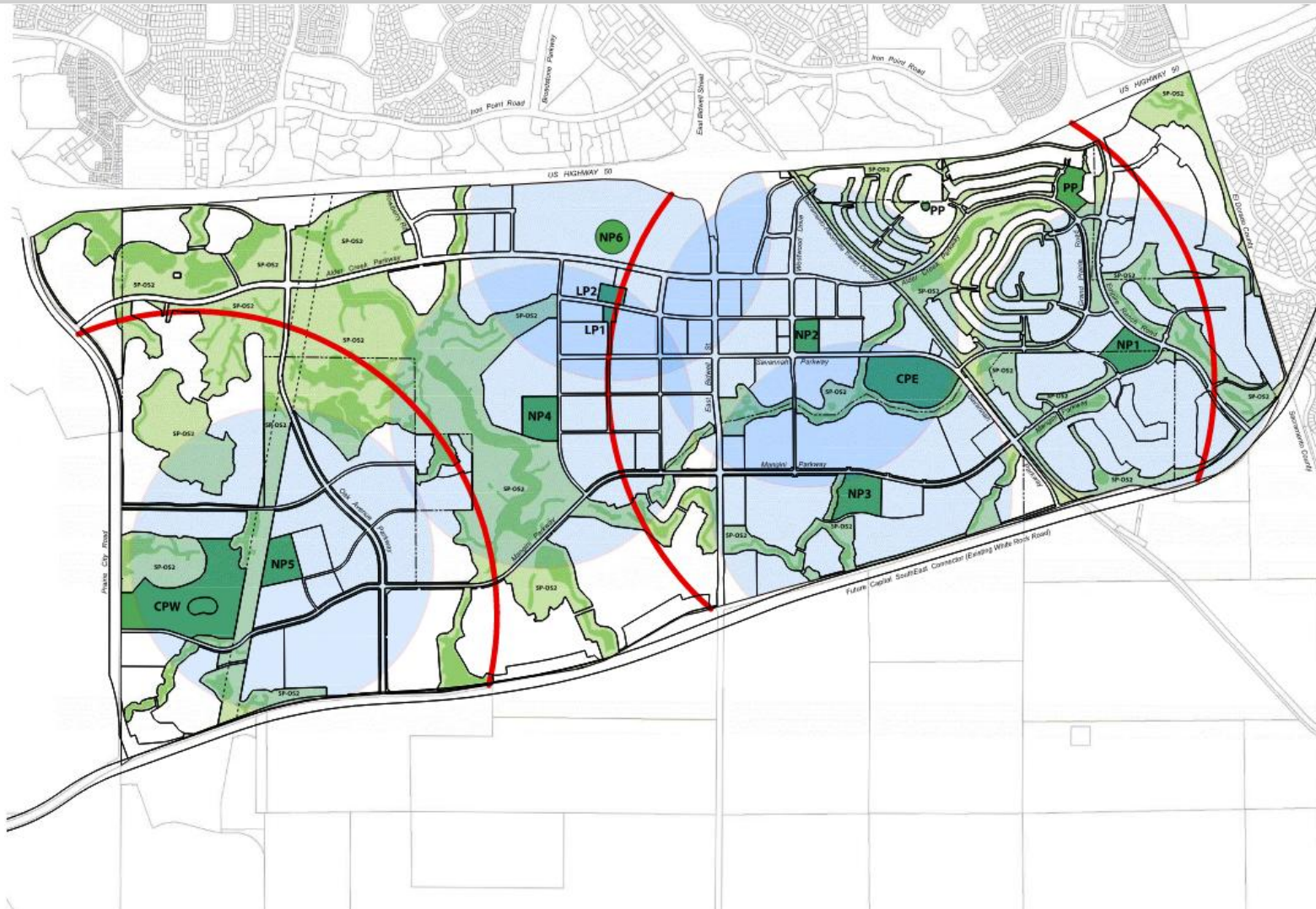




# Community Park West Alternate Site Development Agreement Amendments

# Background

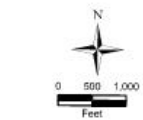


## Legend

-  SP-OS1 Preserve Open Space \*
-  SP-OS2 Passive Open Space \*
-  CP Community Park
-  NP Neighborhood Park
-  LP Local Park
-  PP Private Park (Non-Quimby)
-  Community Park Service Area (1 Mile Radius)
-  Neighborhood Park Service Area (1/2 Mile Radius)

1. Open space shown to indicate the link between open space and parks. Open space not included in parkland dedication.

2. Refer to Table 4.2 - Land Use Summary for more detail.



**Figure 9.1**  
**Parks**



US HIGHWAY 50

Proposed New Alt Park Site

Alternative Park Site

Community Park West

Proposed New Alt Park Site

ALDER CREEK PARKWAY

WESTWOOD DRIVE

SAVANNAH PARKWAY

GRAND PRAIRIE ROAD

EMPIRE RANCH ROAD

OAK AVENUE PARKWAY

MANGINI PARKWAY

EAST BIDEVELL STREET

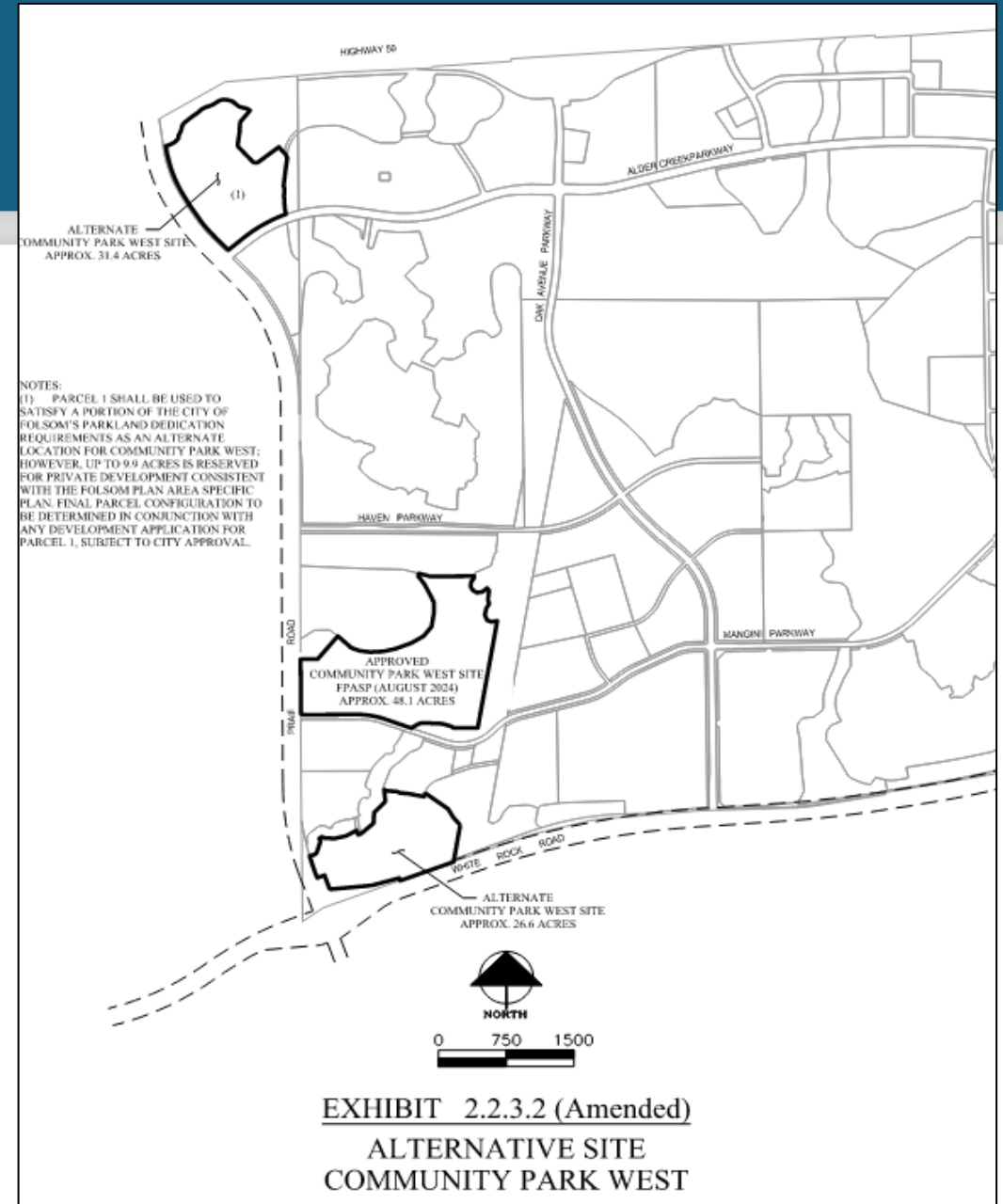
WHITE ROCK ROAD

PRAIRIE CITY ROAD

Legend	
RC	CC
SF	GC
IND/OP	MU
ROW	PQP
OS-OTHER	P
MHD	OS; OS-LC
SFHD	MLD
MMD	

# Analysis

- ✓ Equal Acreage
- ✓ Park Use Permitted
- ✓ Serve Western Plan Area
- ✓ Measure W Open Space Protected
- ✓ Accommodate Expected Programming



# Recommended Action

Conduct a public hearing and upon conclusion introduce and conduct the first reading of Ordinance No. 1363, Ordinance No. 1364, and Ordinance No. 1365, uncodified ordinances approving amendments to three Development Agreements to designate new Alternate Sites for Community Park West.